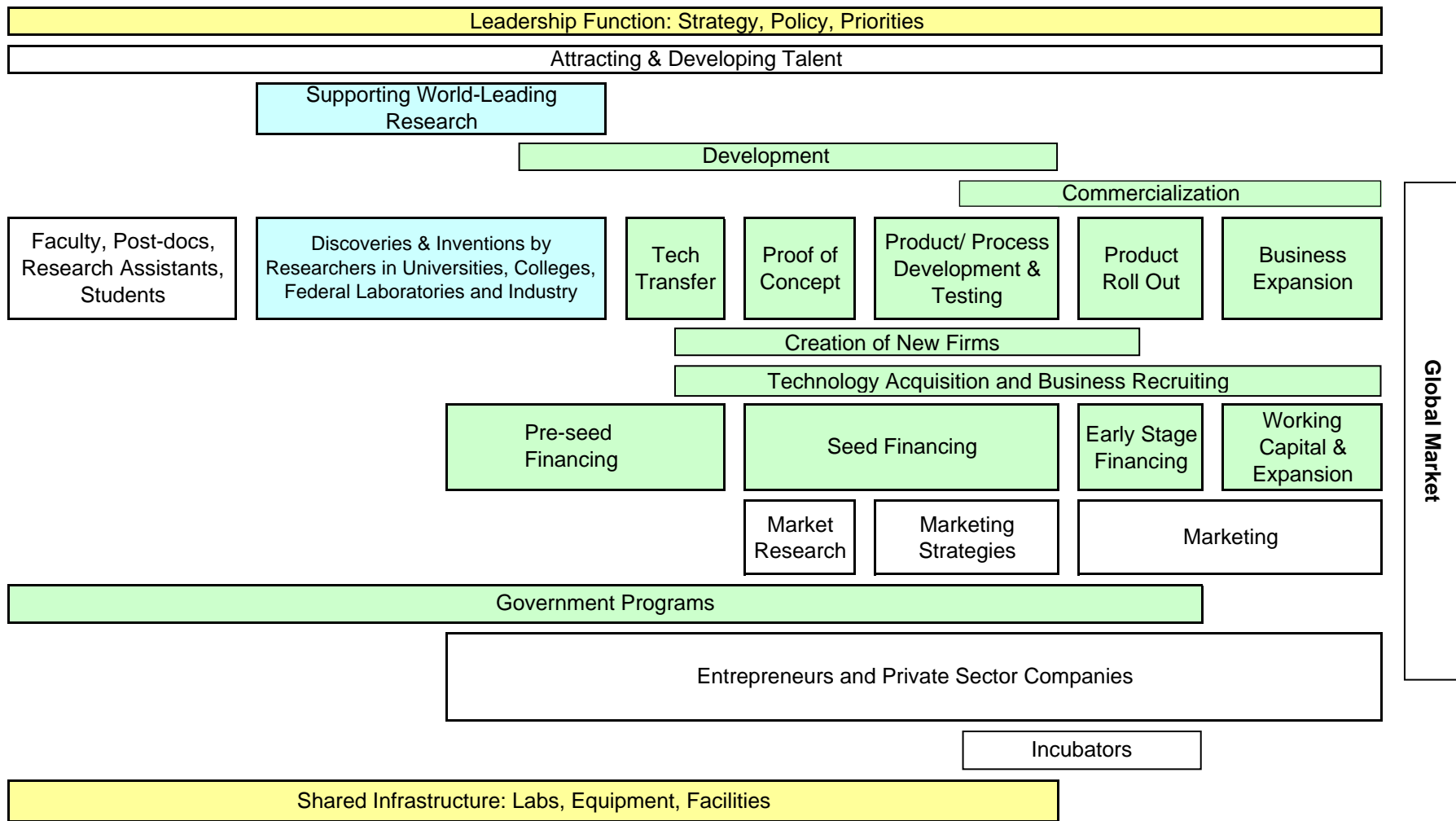


## Innovation "Road Map" Science, Technology and Innovation Council of Canada



It is essential to note that the process from talent to market is **dynamic**, and not linear as shown here. The different aspects of the innovation process have been arranged in a linear way for simplicity of presentation.

Based on model described in "Connecticut's Innovation Network", The Department of Economic and Community Development, January 2006